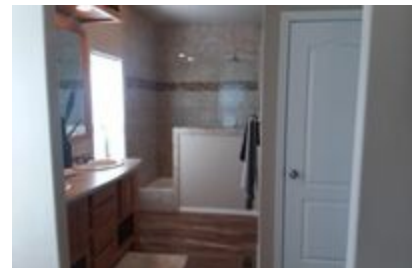
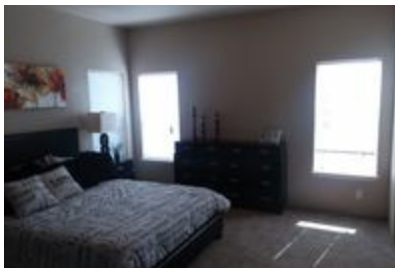




Whispering Pines



Whispering Pines Model number: 72QLV28603AH17

3 beds • 2 baths • 1680 sq.ft. • 28' width • 60' depth

Our home building facilities invest in continuous product and process improvements. Plans, dimensions, features, materials, specifications and availability are subject to change without notice or obligation. Renderings and floor plans are representative likenesses of our homes and may differ from the actual homes. We invite you to tour a Home Center near you and inspect the highest value in quality housing available or call (541) 967-8555 to speak with a Home Consultant. Copyright 2017, CMH. All rights reserved.

<https://www.claytonalbany.com>

CLAYTON HOMES-ALBANY

1437 CENTURY DRIVE NE
ALBANY, OR 97322

Monday - Thursday: By Appt. Only
Friday: By Appt. Only
Saturday: By Appt. Only
Sunday: Closed

(541) 967-8555



Whispering Pines



Whispering Pines Model number: 72QLV28603AH17

3 beds • 2 baths • 1680 sq.ft. • 28' width • 60' depth

Our home building facilities invest in continuous product and process improvements. Plans, dimensions, features, materials, specifications and availability are subject to change without notice or obligation. Renderings and floor plans are representative likenesses of our homes and may differ from the actual homes. We invite you to tour a Home Center near you and inspect the highest value in quality housing available or call (541) 967-8555 to speak with a Home Consultant. Copyright 2017, CMH. All rights reserved.

<https://www.claytonalbany.com>

CLAYTON HOMES-ALBANY

1437 CENTURY DRIVE NE
ALBANY, OR 97322

Monday - Thursday: By Appt. Only
Friday: By Appt. Only
Saturday: By Appt. Only
Sunday: Closed

(541) 967-8555